

MINI-DERRICK SUPER 6000 LOW PRO

SKYLIFT

440-960-2100 | SKYLIFTUS.COM



MINI-DERRICK SUPER 6000 LOW PRO

SKYLIFT

440-960-2100 | SKYLIFTUS.COM

MACHINE SPECIFICATIONS

WEIGHT:	11,690 LBS.
LENGTH:	CHASSIS 14'8" OVERALL 19'
HEIGHT:	7'
WIDTH:	35" CLOSED – 50" OPEN
BASE:	HIGH STRENGTH STEEL CONSTRUCTION
DRIVE:	TWO SPEED PLANETARY REDUCTION
TRACKS:	90" RUBBER
TRACK ALARMS:	AUDIBLE ALARM ON RETRACT
TILT ALARM:	DIGITAL & AUDIBLE – SIDE TO SIDE – FRONT TO BACK
ENGINE:	25 HP KUBOTA DIESEL - TIER 4 COMPLIANT
FUEL CAPACITY:	10 GALLON
HYDRAULIC OIL CAPACITY:	25 GALLON
PUMP:	16 GPM FIXED DISPLACEMENT PISTON PUMP
OPERATING PSI:	3,000 PSI
CONTROLS:	FULL PRESSURE
WINCH:	6,000 LBS.
AUGER DRIVE:	5,800 FT. LBS. OF TORQUE
AUGER STORAGE:	AUTOMATIC ON MAIN BOOM
ROTATION:	440 DEGREE / HIGH STRENGTH BALL BEARING
WORK ZONE:	UNLIMITED
PAD MOUNT TRANSFORMER DECK:	INTEGRATED / 3,000 LBS.
SHEAVE HEIGHT:	40' / 48'
WORKING HEIGHT:	44'
SIDE REACH:	35'
DIGGING RADIUS:	MAX 24' / MIN 13'5"
BOOM ASSEMBLY:	3 SECTION INSULATED ALL HYDRAULIC EXTENSION
LIFT CYLINDER:	6" BORE LIFT CYLINDER
BOOM ANGLES:	-5 DEGREES / +75 DEGREES
INSULATION:	46KV CATEGORY C PER ANSI 92.2
OUTRIGGERS:	HYBRID – RADIAL TYPE
OUTRIGGER SAFETY:	OUTRIGGER INTERLOCK SYSTEM
OUTRIGGER SPREAD:	REAR 15' / FRONT 12' / FRONT TO REAR 14'
AUXILIARY POWER:	HYDRAULIC TOOL CIRCUIT AT GROUND, 2 PLACES
WORK LIGHTS:	SET OF TWO
GROUND PRESSURE:	6.3 LBS. PER SQUARE INCH
OPERATOR PLATFORM:	AT REAR GROUND CONTROLS
GROUNDING LUG:	STAINLESS LUG ON DECK

OPTIONS

HYDRAULIC POLE GUIDE (MANUAL TILT)

HYDRAULIC POLE GUIDE (HYDRAULIC TILT)

DUAL SIDED POLE CARRIERS (2)

TRANSFORMER / MATERIAL HANDLING JIB

SINGLE BUCKET CAPACITY 350 LBS.

ELECTRIC RECOVERY WINCH

HYDRAULIC HOSE REEL FOR TOOLS @ GROUND

DUAL BUCKET CAPACITY 300 LBS. EACH (HYDRAULIC OVERLOAD PROTECTION REQUIRED)

750 LB. CAN HANDLER W/ SHORT JIB

SINGLE BUCKET ARM (NEEDED IF PURCHASING DUAL BUCKET & CAN HANDLER)

H.O.P. HYDRAULIC OVERLOAD PROTECTION SYSTEM

ALUMINUM CARGO BOXES (SET OF 2)

RADIO REMOTE CONTROLS BELTPACK (Includes Start/Stop)

EMERGENCY LOWERING

HIGH/LOW TWO SPEED THROTTLE

12 V OUTLET (CIGARETTE LIGHTER) NEAR REAR CONTROLS

1250 WATT 12 VOLT POWER INVERTER

2000 WATT 12 VOLT POWER INVERTER (DUAL BATTERY)

EXTRA SET OF PINS FOR ENTIRE UNIT

CONTINUOUS ROTATION

AUDIBLE ALARMS FOR OUTRIGGERS

BOOM OVERSTOW SWITCH

TOOL OUTLETS @ BOOM

4 THERMOPLASTIC MOBILE MATS 2' x 8' LONG

STORAGE BRACKET FOR GROUND MATS ON TRAILER

ENGINE BLOCK HEATER

REAR WINCH RECEIVER BRACKET

KELLY BAR EXTENSION

PINTLE EYE EXTENSION ON TRAILER & EXTENDED SAFETY CHAINS

SPARE TRAILER TIRE

BRACKET FOR SPARE TIRE STORAGE ON TRAILER

SCREW ANCHOR ASSEMBLY

BRACKET FOR SCREW ANCHOR

ELECTRIC TONGUE JACK

SINGLE PHASE LIFT ARM

SET OF (4) WOODEN 19.25 x 19.25 x 1-7/8" OUTRIGGER PADS

SET OF (4) PLASTIC 18 x 18 x 1.5" OUTRIGGER PADS

OUTRIGGER PAD CARRIER

AUDIBLE ALARM FOR H.O.P.

OPTIONS *(continued)*

KELLY BAR ADAPTER 2-5/8" MALE HEX HUB TO 2" FEMALE APPROX. 18" LONG

KELLY BAR ADAPTER 2-1/2" MALE HEX HUB TO 2" FEMALE APPROX. 18" LONG

SOLAR BATTERY CHARGER ON TRAILER

EXTRA SET OF WORK LIGHTS (2)

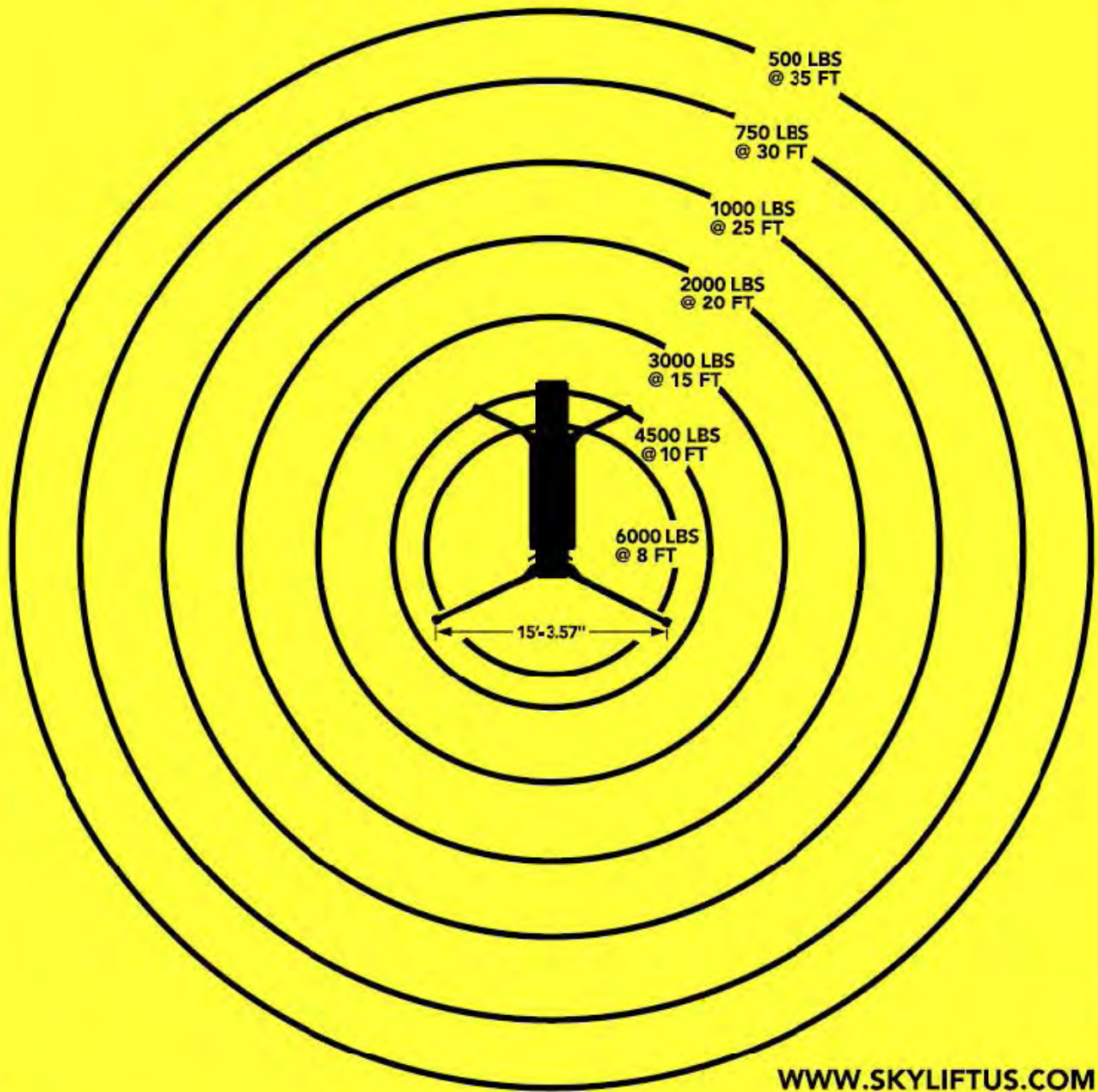
EXTRA SET OF MACHINE MANUALS

90" NON-MARKING TRACKS

RECOMMENDED TRAILER: 20' / 20,000 LB. G.V.W.R. UTILITY TRAILER

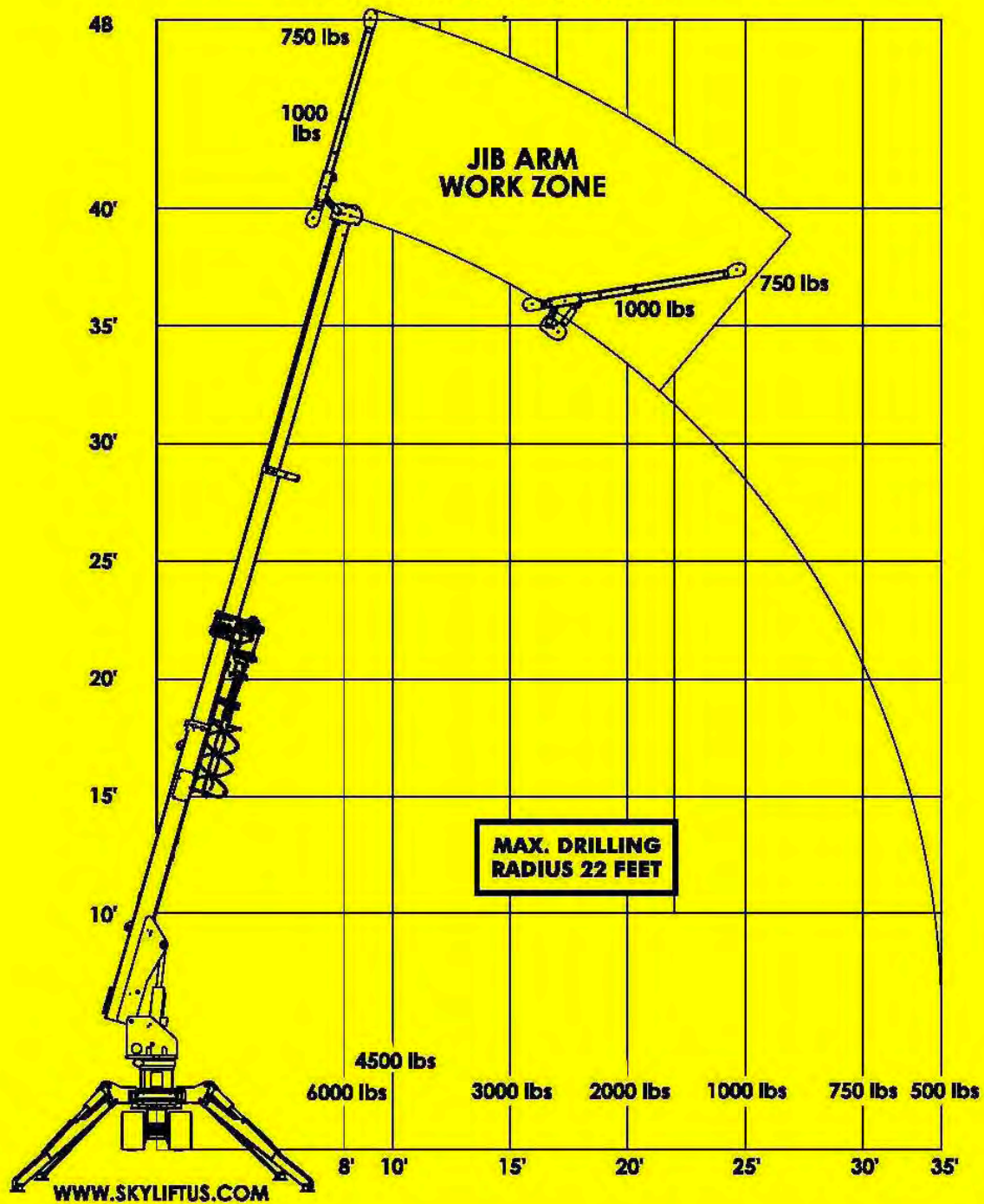
MINI-DERRICK *5-6000* LOW PRO

OVERHEAD WORK LOAD AREA



MINI-DERRICK 5-6000 LOW PRO

WORK LOAD CHART



CAN HANDLER WORK LOAD CHART MDS6000

